



# SHADING SOLUTIONS





# SHADING SOLUTIONS

We work quickly and reliably in a professional manner at competitive prices. However, what distinguishes us from other market players is that we are committed to make the impossible possible. We resolve anything others have left behind, because we rely on our trained professionals and experience of three decades to deliver solutions that meet customer expectations.



- ROLLER SHUTTERS
- BLINDS
- PERGOLAS
- GLASS ROLLER SHUTTERS

# ROLLER SHUTTERS SOLUTIONS

**A trendy and space-saving solution to close door openings.**  
**Our company produces roller shutters for residential and industry uses**



**Plasterable shutter boxes** are exterior shutter boxes converted to conceal the box as much as possible. It enhances the aesthetics of the system, because only the lid of the lower opening remains exposed, which can be painted to the colour of your choice.

Plasterable systems are recommended where doors and windows have been installed during the construction or renovation with sufficient overhead space that prevents shutter boxes project over and above the opening.

When installed properly, plasterable shutter boxes have excellent thermal insulation properties. Recently plasterable shutter boxes were installed in existing buildings that received thermal insulation on facades, because renovation is a great opportunity for concealing shutter boxes partially. If there is sufficient space available, then exterior shutter boxes can integrate mosquito net.

**Additional roller shutters with exterior boxes** are often adopted to the style and architecture of the building to enhance aesthetics.

To this end, the colours of shutters slats, box, and guide channels are harmonised.



# FERER ROLLER SHUTTER BOX

Roller shutter box has been developed by Fer-er Kft. that suits and accommodates any type of roller shutters and/or rolling mosquito net. It is thermally insulated on both sides as well as on the top. There is a 2 cm-thick polyurethane foam on both the inner and outer sides and it also features 2 cm-thick styrodur type heat insulation as standard. The top cover is made of 4 cm thick polyurethane foam. The inner and outer can be made of nikecell, austrotherm, heraklyth or any other polystyrene-based thermal insulation material or any sheet. In the latter case, the thickness of the polyurethane foam varies.



- Depending on the type of material used, the inner and outer surfaces of the roller shutter box can be plastered, tiles, covered, or covered with additional thermal insulation. When plastered, the lower edge of the inner and outer surfaces may need reinforcement with aluminium levelling profile.
- As reinforcement, use lateral wood inserts (flat steel profiles for large openings), and inject polyurethane foam between the box sides and window reveal as supplementary reinforcement.
- End caps are made of galvanized steel sheet or thick aluminium sheet. They allow installation of heavy roller shutters (wood, steel) as well.
- Inner surface is made of moisture-proof fibreboard.
- The assembly is bolted to lintels or ceiling above the door or window.
- Roller shutter box can accommodate guide rails of any size.
- Access hole is located at the lower and inner side of the roller shutter box and covered with a plastic lid or powder-coated aluminium sheet. For high-end solutions, it can be made of material and colour identical to those of the door and window.
- When installed and viewed from the façade, the roller shutter box is completely concealed and there is nothing to disturb the harmonized finish of the facade.
- On request, roller shutter box can accommodate plastic, wood, aluminium or steel roller shutters.

# BLINDS SOLUTIONS

Wide slats can be adjusted infinitely to any angle to provide the room with optimum illumination and heat reflection residents need in the part of the day. Aluminium slats have a fade- and UV-resistant finish to ensure longevity. Since sunbeams are blocked in front of the door or window, blinds have outstanding shading properties.

Thanks to their special geometry, external blinds can withstand increased loads such as strong winds. For increased comfort, motorized blinds are also available with control ranging from simple switches to remote controllers equipped with wind and light intensity sensor. Multiple blinds on the same façade can and are recommended to be interconnected, with optional intelligent sun control.



**Blinds are multifunctional shading solutions combining external slats and modern design that feature perfect shading.**





# TRANSPARENT DESIGN ROLLER SHUTTERS SOLUTIONS

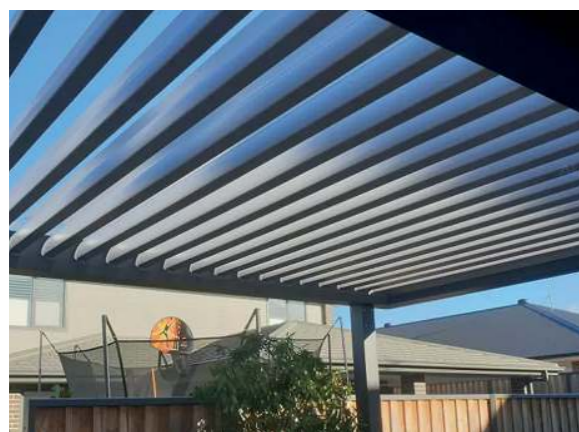
Transparent design roller shutters are highly-innovative, modern, elegant and stylish solutions to shut openings of commercial (hotels, restaurants, banks, etc.) and residential facilities (terraces, winter garden, swimming pools).



## PERGOLAS SOLUTIONS

The pergolas we manufacture can be used all year round and contains materials that resist coastline atmosphere and extreme conditions. It has unlimited lifespan (except for electronic components).

In addition, it has an exclusive appearance and is very practical to use, especially with the optional accessories.



**Pergolas are great to enhance the functions and aesthetics of residential homes as well as provide restaurants with exclusive shading. Built-in lights and heaters are available to add to your comfort.**



- Supreme rolling shutter
- Transparent
- High quality / High resistance
- High impact and burglary resistance
- Very stylish appearance
- No distortion effect
- High-wind resistance in the lowest position, anti-burglar design (lock/fixing elements)





**Fer-Er Gate and Shading Technology Ltd.**

**Contact: Ferenc Lusztig**

**E-mail: [ferer@fer-er.hu](mailto:ferer@fer-er.hu)**

**Phone: + 36 30 9577 657**

**[www.ferer.hu](http://www.ferer.hu)**